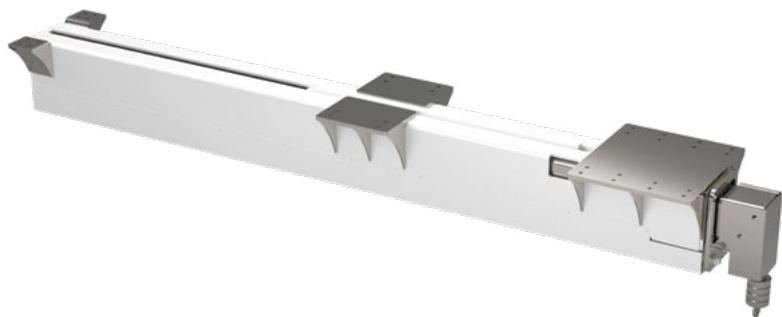


# LINEAR CEILING CRANES model 3122/24

## loading capacity 350 Kg to 700 Kg



model	A (mm/inch)	B (mm/inch)	C (mm/inch)	H (mm/inch)	L (mm/inch)	Cable lenght (mm/inch)	Capacity standard (kg/lbs)	Capacity optional (kg/lbs)	Weight (kg/lbs)
3122/53	3000 118"	2300 90"	5380 212"	275 11"	430 17"	3500 138"	350/800	500/1100	415/900
3122/61	3500 138"	2600 102"	5180 243"	275 11"	430 17"	-	350/800	--	470/1030
3124/45	4500 177"	3100 122"	7600 299"	330 13"	500 22"	6000 236"	700/1550	--	512/1100

Telescopic ceiling crane for internal garage or box installation, ideal for medium and large-sized yachts.  
 Made of AISI 316L stainless steel and painted white (standard).  
 This crane extends a little more than 4.5m, it is fitted with a 6m cable and has a maximum loading capacity of 700 Kg.  
 Possibility of product certification.

LEAD TIME TO BE CONFIRMED

